



121 Kylepark Drive, Uddingston, G71 7DD



Viewing by appointment with Residence Uddingston

T: 01698 444222 | E: uddingston@residencestateagents.co.uk | A: 61-63 Main Street, Uddingston, G71 7EP



RESIDENCE



4 Bedrooms | 2 Public Rooms | 3 Bathrooms

A substantial and beautifully extended traditional detached villa situated within the highly sought-after Kyle Park Drive, one of Uddingston's most prestigious residential addresses.

Broomlands successfully blends elegant period character with modern family living, offering spacious and versatile accommodation over two levels. The property retains a wealth of original features including impressive high ceilings, ornate cornice work, picture rails, and beautiful stained-glass detailing to both the front entrance door and half-landing window.

The ground floor accommodation comprises a welcoming reception hallway, a generous bay-windowed lounge, formal bay-windowed dining room, and a spacious fourth bedroom which offers flexibility as a guest room, home office or additional sitting room. Undoubtedly the heart of the home is the quality breakfasting kitchen, complete with Aga and open plan to the impressive family room extension, creating a superb space for everyday family life and entertaining. A utility area and convenient WC complete the lower level.

The first floor provides three well-proportioned double bedrooms, including an impressive principal bedroom, together with a contemporary shower room and separate family bathroom.

Externally, the property is set within beautifully maintained garden grounds. The private rear garden enjoys an excellent degree of seclusion and provides an ideal setting for outdoor entertaining and family enjoyment. A driveway to the side offers off-street parking and leads to a garage located to the rear.

Rarely available, Broomlands presents a unique opportunity to acquire a character-filled family home that has been sympathetically extended while retaining the charm and features synonymous with properties of this era.

Viewing is highly recommended to appreciate the size, quality and setting of this exceptional family home.



2228.10 sq ft | EER = D



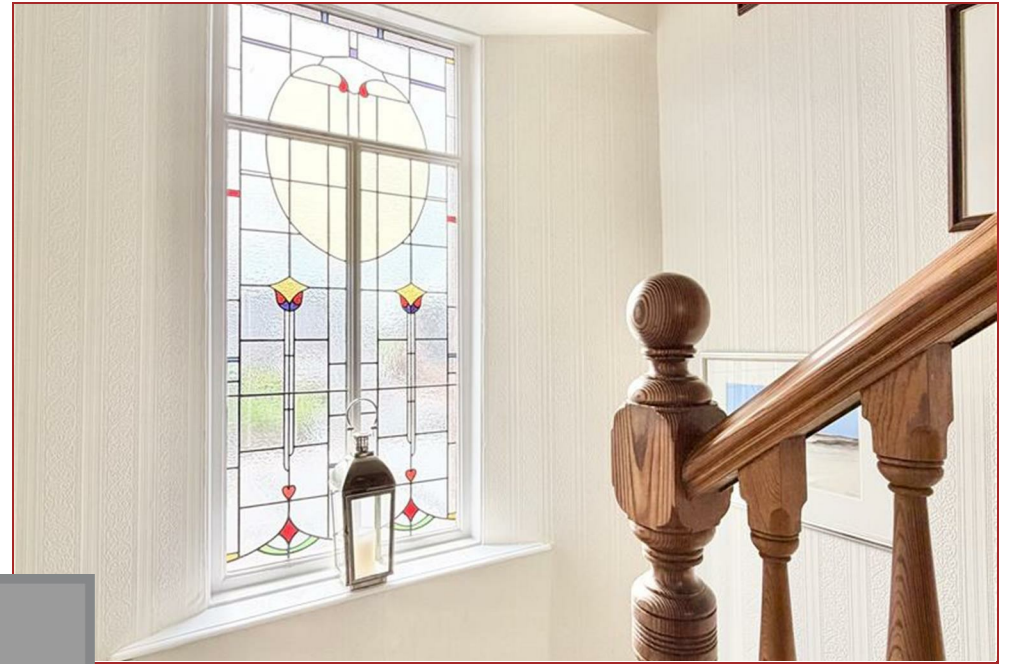
RESIDENCE





RESIDENCE





RESIDENCE



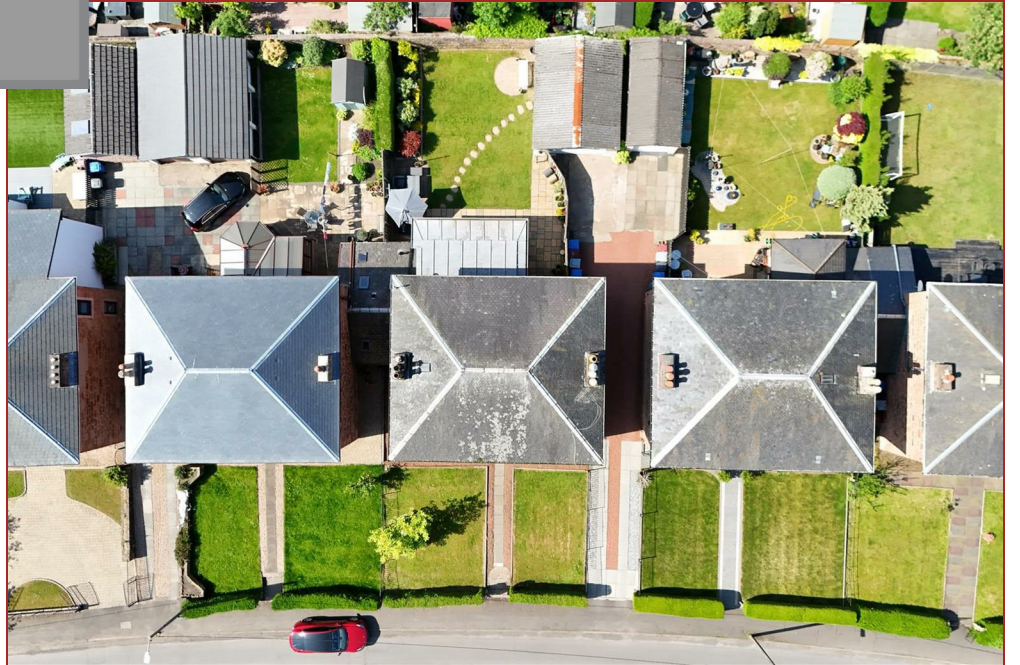


RESIDENCE

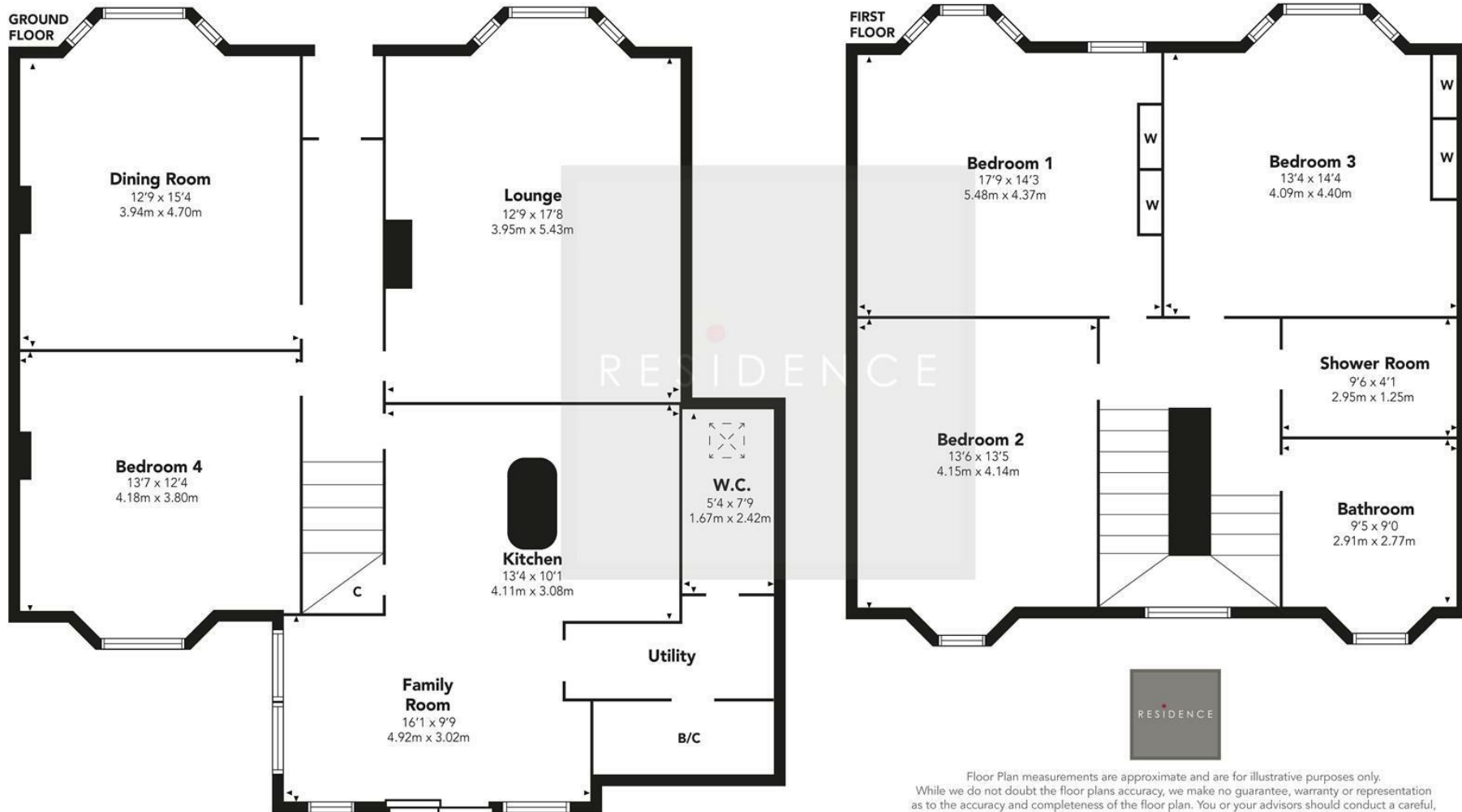




RESIDENCE



Kyle Park Drive



Floor Plan measurements are approximate and are for illustrative purposes only. While we do not doubt the floor plans accuracy, we make no guarantee, warranty or representation as to the accuracy and completeness of the floor plan. You or your advisors should conduct a careful, independent investigation of the property to determine to your satisfaction as to the suitability of the property for your space requirements.

Produced by Plush Plans Ltd

We believe these details to be accurate; however, they do not form any part of a contract. Fixtures and fittings are not included unless specified in the enclosed. Photographs are for general information and it must not be inferred that any item is included for sale with the property. All distances and measurements are approximate. Floorplans may not be to scale and are for illustration purposes only.